



jordan fishwick

WEST DIDSBURY
Barlow Moor Court



Barlow Moor Court, West Didsbury, M20 2UX

Guide Price £250,000



The Property

Barlow Moor Court is a select purpose built development located adjacent to West Didsbury's vibrant Burton Road and all the shops, bars and restaurants it has to offer. The Metrolink is only a short stroll away, yet the development remains peacefully tucked away among lovely gardens and grounds. The apartment enjoys a first floor position and offers generous living space which is presented to a high standard throughout, incorporating two excellent double bedrooms, a light & spacious living room, dining kitchen with a range of units and a bathroom with chrome fittings. In addition, there is gas central heating with a recently fitted boiler and uPVC double glazing. This particular property is one of the few enjoying a gated allocated parking space. *NO ONWARD CHAIN*

Directions

M20 2UX



- Lovely first floor apartment
- Two excellent double bedrooms
- Light & spacious living room
- Dining kitchen
- Bathroom with chrome fittings
- Gas central heating (New Boiler)
- uPVC double glazing
- Allocated gated parking
- Great location close to Burton Road
- No onward chain

Postcode - M20 2UX

EPC Rating - C

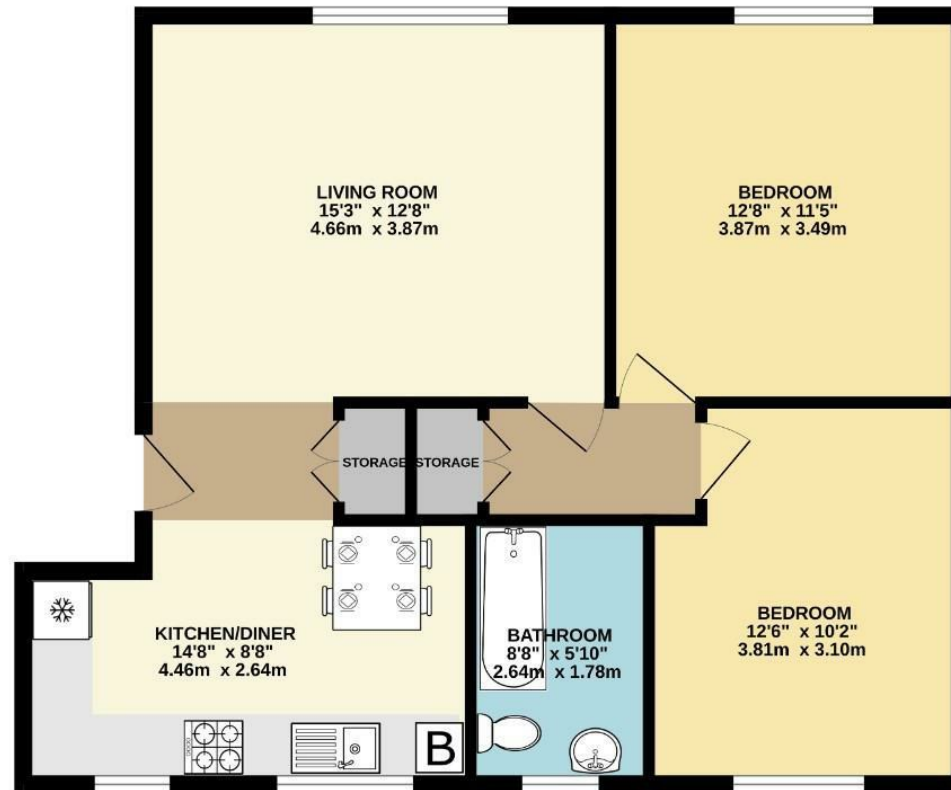
Floor Area - 701.00 sq ft

Local Authority - Manchester City Council

Council Tax - B



FIRST FLOOR
701 sq.ft. (65.1 sq.m.) approx.



TOTAL FLOOR AREA: 701 sq.ft. (65.1 sq.m.) approx.
Measurements are approximate. Not to scale. Illustrative purposes only.
Made with Metropix ©2025



These particulars are believed to be accurate but they are not guaranteed and do not form a contract. Neither Jordan Fishwick nor the vendor or lessor accept any responsibility in respect of these particulars, which are not intended to be statements or representations of fact and any intending purchaser or lessee must satisfy himself by inspection or otherwise as to the correctness of each of the statements contained in these particulars. Any floorplans on this brochure are for illustrative purposes only and are not necessarily to scale.

Offices also at: Wilmslow, Macclesfield, Hale, Sale, Chorlton, Glossop, Manchester & Salford

757-759 Wilmslow Road, Didsbury Village, Manchester

0161 445 4480

didsbury@jordanfishwick.co.uk
www.jordanfishwick.co.uk